



Job Title: Leadership Lecturer (Management Faculty)

Department: BPP University, School of Business & Technology

Location: London (with some national and possibly international travel)

Contract: Full time, permanent

Reporting to: Faculty Manager

The start date for this role will be no earlier than September 2019

Job Background

The BPP School of Business & Technology is recruiting Management Faculty to support the delivery and development of Management programmes across the School. We are looking for highly motivated practitioners with a keen sense of the corporate context, who are excited by the prospect of using their professional expertise to develop careers in higher education. For this role, we are interested in hearing from practitioners with extensive experience in Leadership.

Job Purpose

The role of the Faculty lecturer is to develop and deliver innovative and high quality teaching and learning, programme and module curricula, and teaching and learning materials (at undergraduate and post-graduate levels), that reflect the current skills and capability requirements of corporate employers. Lecturers must have significant professional experience in their discipline, as well as the enthusiasm to pass their passion for their specialist area on to students, learners, clients and peers.

Faculty will undertake a variety of duties including, but not restricted to module leadership, curriculum and content design, assessment development and marking, personal tuition, project supervision and coaching, student cohort and group management, as well as teaching and training activities (face to face or online via the Adobe Connect platform).

Faculty may also be required to support business development, undertake thought leadership activities, and/or learner and client recruitment activities, such as attending client briefings and/or recruitment events.

Key Responsibilities

1. Maintain a sophisticated understanding of the current skills and capability requirements of corporate employers, including an appreciation of how technology is impacting the workplace, the professions and particular job roles in their specialisms.
2. Develop and deliver high quality module teaching and learning materials including detailed schemes of work, module, session and webinar content, topic guidance and activity checklists that reflect current corporate and professional body priorities.
3. Develop relevant and appropriate assessments, work-based learning projects and professional development activities.
4. Design relevant, appropriate marking guidance, achievement indicators, complete robust marking, evaluation and feedback processes.
5. Complete data driven analysis, reporting of learner and client outcomes.
6. Bring professional expertise and an understanding of the current corporate landscape into teaching and learning.
7. Analyse corporate capabilities in their specialist areas and develop tailored corporate training offerings based on relevant professional experience and expertise.
8. Provide professional developmental insight and use coaching models to support in work or academic projects as required.
9. Manage cohorts of students to ensure the integrity and operational efficiency of the programmes.
10. Undertake thought leadership activities that contribute to the School's knowledge base and increases its profile among potential students and clients.
11. Engage with commercial and business development activities and provide client liaison as required.
12. Any other duties appropriate to the grade and nature of the post.

Role Requirements

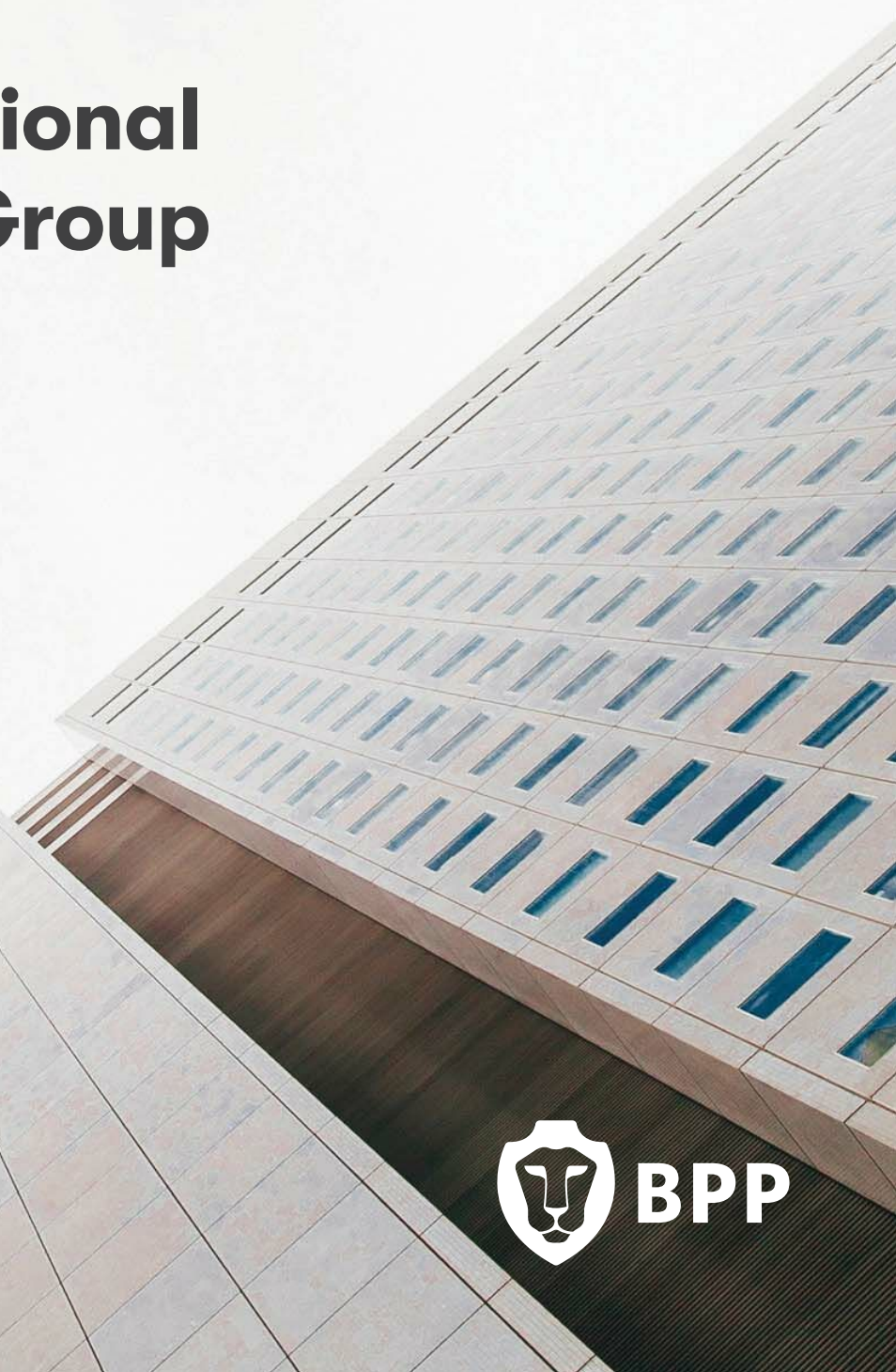
	Essential	Desirable
Qualifications	<ul style="list-style-type: none">• First degree and/or relevant professional qualifications.	<ul style="list-style-type: none">• Relevant postgraduate degree;• Other industry related professional accreditations and/or certifications.
Development	<ul style="list-style-type: none">• For those not currently holding either a teaching qualification or a Fellowship of the HEA membership, a commitment to achieving	

	these through BPP's PGCLT or HEA scheme is essential.	
Experience	<ul style="list-style-type: none"> • Extensive professional experience in relevant corporate roles; • Understanding of organisational capability requirements in specialist area; • Leadership, training or staff development experience; • Giving presentations or public speaking; • Experience of negotiation with and managing different stakeholders. 	<ul style="list-style-type: none"> • Understanding of work based learning; • Experience of coaching and/or mentoring.
Skills	<ul style="list-style-type: none"> • Excellent written and verbal communication skills; • Excellent presentation skills; • The ability to plan, organise and prioritise workload; • The ability to work well in a team and be collaborative; • Commerciality; • Digital literacy; • Self-motivation. 	
Values	<ul style="list-style-type: none"> • Student-centric; • Ownership and accountability; • Team orientation. 	

Please note the successful candidate will be required to undergo a DBS check



BPP Professional Education Group



BPP

Welcome



Today, BPP is both a university for the professions and a professional educator. We concentrate on the law, business and health professions and what we look for in people who come to work for BPP is a passion to be different.

We're already a global company of over 1,500 people, but our ambitious growth targets mean we're always on the lookout for new talent.

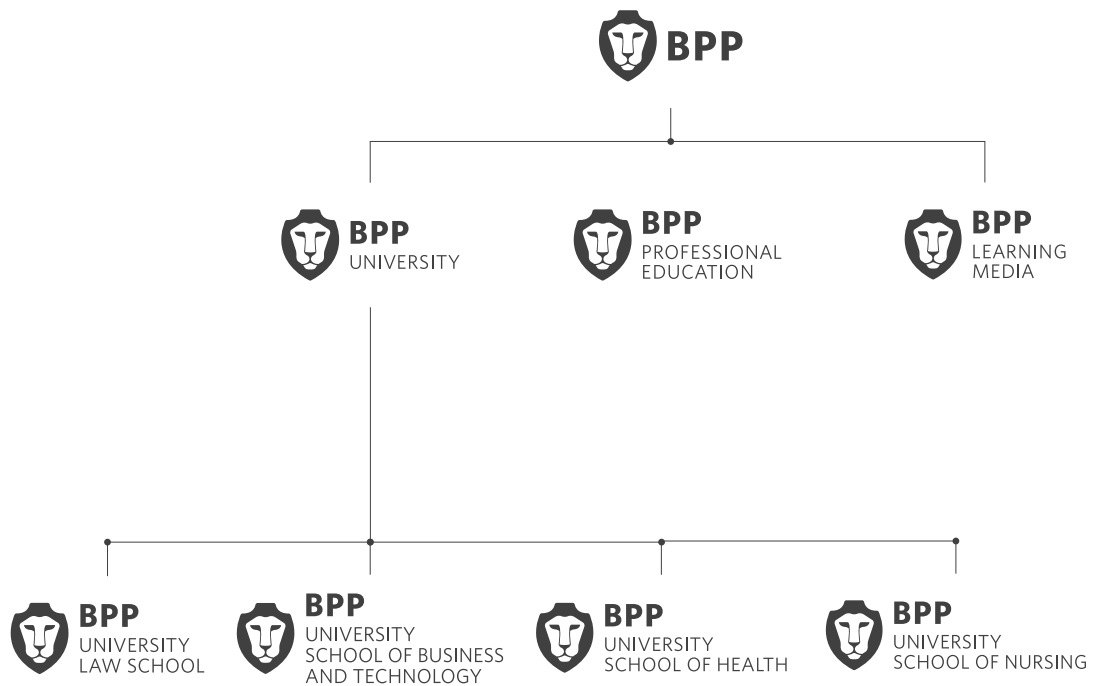
If you share our passionate and innovative approach to education, come and join the BPP team, we'd love to welcome you.



About BPP Professional Education Group

The BPP Professional Education Group, founded by Alan Brierley, Richard Price and Charles Prior (the BPP of our name), is a global education provider delivering world-class professional qualifications. The Group delivers undergraduate and postgraduate degree programmes, apprenticeships and professional qualifications across the UK, internationally and through innovative online learning platforms.

When you work with BPP, you will be part of a business that really believes in supporting your personal and professional development. With so many different business areas, we offer a wide range of exciting opportunities within a culture of encouragement, respect and teamwork.



BPP University

BPP University is part of the BPP Professional Education Group. However, BPP University is a distinct legal entity with its own degree-awarding powers approved by the UK Privy Council.

Voted the UK's Best Higher Education Provider by Education Investor Magazine in 2013, we are the UK's only university solely dedicated to business and the professions. Our links with leading businesses and organisations allow us to provide a highly regarded professional education. Our programmes are designed in partnership with employers and respected professionals in the fields of law, business, finance and health.

We look for lecturers who share our passion for education and making a real difference in students' lives.

BPP University Schools

BPP University Law School

BPP University School of Business and Technology

BPP University School of Nursing

BPP University School of Health



BPP University School of Business and Technology programmes have been successfully delivered to leading companies such as Lloyds Banking Group and TUI.



15,000 students currently study with BPP University



BPP University Law School was ranked in the top five universities for quality of teaching in Legal Week's 2014 annual Law Student Report.

BPP Professional Education

BPP Professional Education is one of Europe's leading specialist providers of professional education, delivering a range of industry-leading Professional Qualifications, Professional Apprenticeships, Professional Development programmes and Learning Media. We enjoy a trusted adviser status for many of our clients and institutes and offer professionals opportunities to progress through a variety of qualifications in accountancy, tax, insolvency and banking and finance.

Our courses are all supported by BPP Learning Media, which provides a wide range of learning materials for students, colleges and bookshops all over the world.

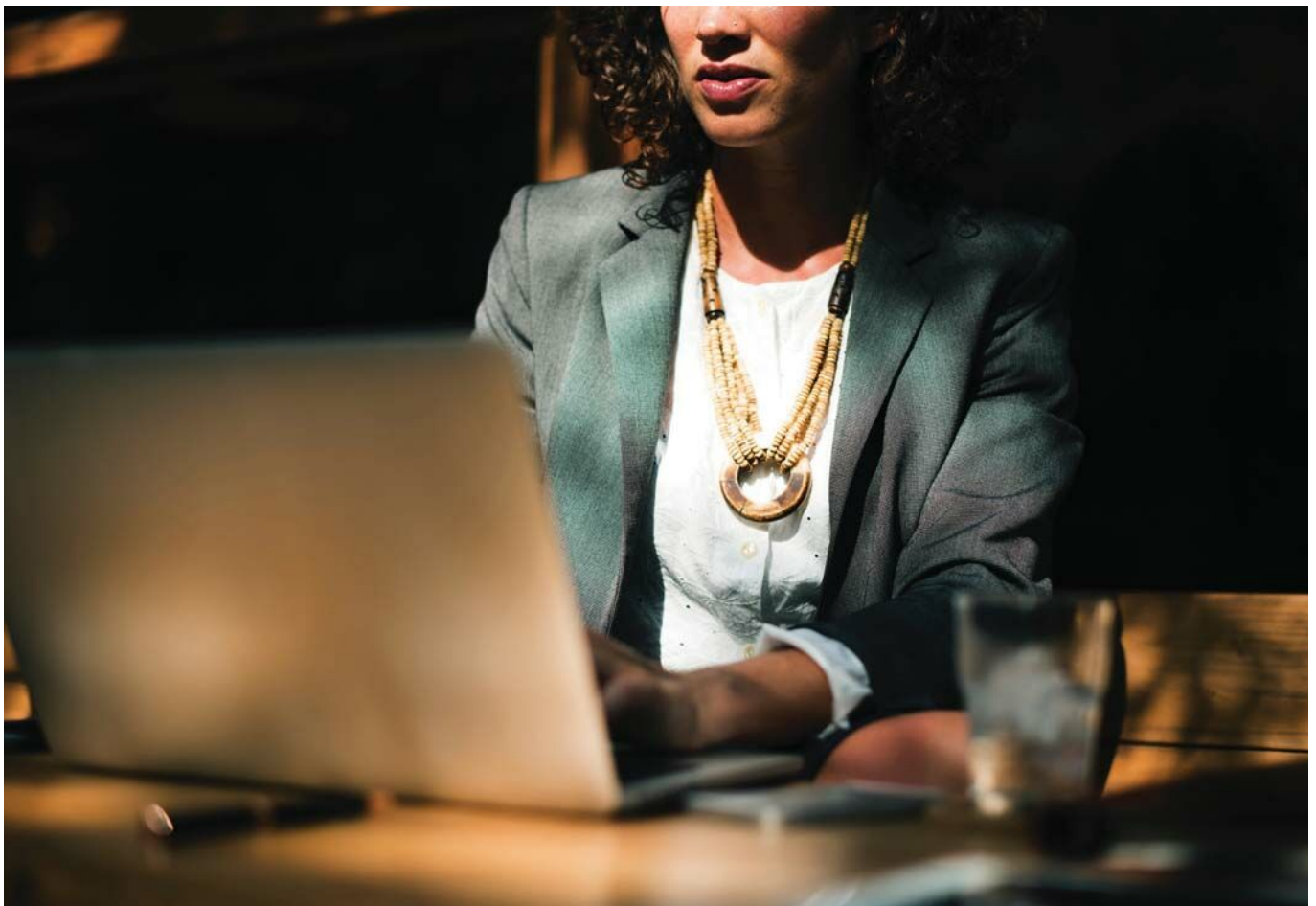
As one of the world's leading providers of top quality printed and digital learning resources, BPP Learning Media supports tuition providers, professional bodies and students in over 180 countries.

BPP Learning Media

We also develop curriculum content for BPP qualifications including Accounting, Financial Services, Tourism, Marketing, Law and Insolvency as well as content for Professional Education Bodies from around the world.

Support Functions

- ✓ IT
- ✓ Finance
- ✓ Human Resources and Learning & Development
- ✓ Commercial
- ✓ Marketing
- ✓ Legal and Compliance
- ✓ Operations



Why work at BPP? – Employee benefits

Training and development

Whether it's something you want to learn or something we recommend you learn, BPP invests heavily in your career development.

We provide a comprehensive in-house leadership and management training programme and a wide range of personal and professional development opportunities.

You will have free access to all of BPP's courses – so from gaining an ACCA accountancy qualification to a Graduate Diploma in Law, you can take your career in any direction you like.

Salary

BPP makes sure it gets the basics right with good, competitive salaries. These are reviewed annually.

Holidays

Everyone needs time to relax and rejuvenate. That's why we provide generous annual leave of 30 days for teaching staff and 25 days for support staff (rising to 30 days after five years and pro-rata for part-time employees).

As part of our annual benefits selection window, you can purchase up to 10 days' extra holiday each year.

Private Medical Insurance

When you work at BPP, you can apply to be covered for the cost of private medical treatment as an outpatient or inpatient (up to defined limits).

Subject to meeting scheme requirements set by our provider, this begins as soon as you join and we'll cover the full cost of the premium. You can also choose to buy cover for your spouse, partner or children at corporate rates.

Health Cash Plan

Our Health Cash Plan provides you with reimbursement, up to a set amount, towards everyday healthcare services such as eyesight tests, new glasses, health screening, etc. You can choose to purchase cover from four different levels.

Dental Insurance

Our Dental Insurance reimburses you for all private dentistry treatment. At the end of your probationary period, cover can be purchased for you and your family at corporate rates.

Life Assurance

In the unfortunate event that you pass away while working at BPP, your nominated beneficiaries will receive a lump sum of four times your annual base salary. At the end of your probationary period you can choose to top up this protection.

Income Protection (PHI)

We know that suffering long-term illness is stressful enough. So if you are unable to work for 26 weeks within a 12-month period because of related illness or injury, you'll be eligible for up to 75% of your annual salary until you are able to return (less £5,312 p.a.)

Employee Assistance

From time to time you may need confidential advice, on anything from legal to personal or financial issues. Our Employee Assistance gives you access to free phone support, 24 hours a day.

Pension

You'll want to look forward to a well-deserved retirement.

If you are assessed as an "Eligible Job Holder", you will be automatically enrolled into our Group Personal Pension Plan. A pension contribution will be deducted from your monthly salary via salary sacrifice and you will receive an Employer pension contribution as well as receiving the full benefit of the Employer's National Insurance contributions of 13.8%. You will be able to increase your contribution, with BPP matching up to 5% either during the Annual Benefits Selection Window or once you have completed your probation period.

Employees who are not assessed as an "Eligible Job Holders" will still be able to join our Group Personal Pension Plan once they have completed their probation or during the Annual Benefits Selection Window.

'Cycle to work' scheme

With so many benefits to your health, we offer a cycle to work scheme in conjunction with CycleScheme. This gives you the loan of a bike and commuting equipment for a period of one year, tax-free.

At the end of the Hire Period, you will have the option to either purchase the bike, extend the Hire Period, or return the bike.

Season Ticket Loan

To ease the expense of public transport, our interest-free loan is put into your bank account and we'll simply deduct monthly repayments.

Credit Union

BPP employees have access to a credit union and can save or repay loans direct from their net pay. The credit union is a not-for-profit co-operative.

Why work at BPP? – Employee benefits

BPP and the community

BPP takes its corporate social responsibility very seriously. With many programmes designed to help our students succeed, we also support the wider community with a range of projects through our Pro Bono Legal Centre – winning Best Contribution by a Team of Students for Streetlaw Homeless in the 2011 Awards.

BPP is supportive of our employees doing voluntary and charity work.

BPP Rewards

BPP Rewards is a company funded scheme that offers genuine discounts and allows you to make significant savings each year on everything from your petrol, groceries, holidays, clothing, and home insurance. BPP Rewards provides exclusive access to discounts and cashback at over 1,500+ retailers, including Marks & Spencer, Sainsbury's, Debenhams, and Lastminute.com to name a few.

Selecting your benefits

Upon starting with BPP, you will be invited to select your benefits via our online platform on the 1st of the month following your start date. You will need to register on the platform when accessing it for the first time.

