

Paediatric Registered Nurse - Children's Ward

Noble's Hospital - Department of Health & Social Care

We are looking for **proactive** and **committed** Registered Children's Nurses (Bands 5 & 6) to join our developing paediatric team here at Noble's Hospital to ensure we can continually meet the needs of the children on the Isle of Man.

This is a great opportunity for colleagues who are keen to be part of a family orientated organisation, working in a unique clinical environment characterised by its **warmth, innovation and fun**.

Please take the opportunity to be part of our dedicated team where innovation and the desire to make a difference is key!

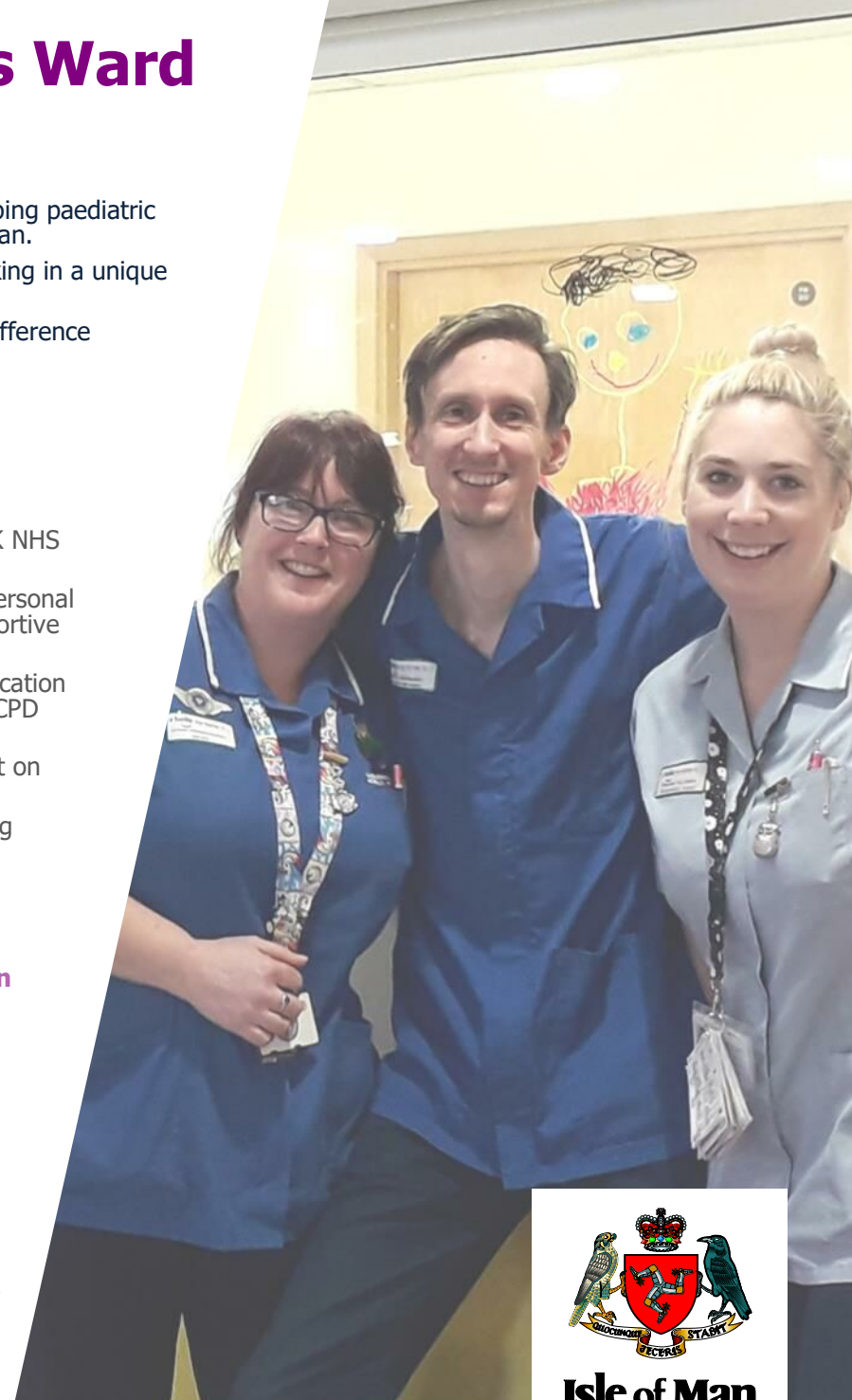
Why join us?

- **Competitive** salary and annual leave entitlement. Our annual leave starts at 27 days + 10 Public Bank holidays. We offer increased entitlement is available for candidates with 10+ years service within the UK NHS or IOM DHSC).
- Developing our team to be the best they can be is important to us and we actively support your own personal **career goals, aspirations and development** and if you are a newly qualified nurse, we offer a supportive preceptorship programme
- We have dedicated **Learning & Development facilities** - Noble's Hospital operates a well-resourced education and training centre. We provide excellent opportunities for professional learning including an extensive CPD programme
- Paid **interview expenses and a relocation package** of up to £7,000 are available, with advice and support on relocation
- Enjoy the **fantastic lifestyle opportunities** the Island has to offer - walking, diving, sailing, mountain biking and great beaches
- You'll be working with a **friendly and supportive** team who are committed to delivering a quality service
- **Free car parking** on site at Noble's Hospital
- We know changing jobs can be daunting at times so we have a **buddy scheme** here at Noble's; if you're successful we'll pair you up with a fellow nurse buddy who can show you the ropes and **help you settle in** here at Noble's
- Our employees are able to take advantage of our **rewarding pension scheme**; we offer a defined benefit scheme where both you and the organisation contribute towards your future



Values

In the Department of Health and Social Care we pride ourselves on being **committed, appreciative, respectful** and **excellent**. CARE represents what we are about, what we stand for and what we value. All our recruitment, performance management and development are based on our CARE ethos.



Isle of Man
Government
Reilrys Ellan Vannin

Key responsibilities

Your responsibilities would include:

- Providing high quality care, evidenced by clinical audit, placing the child/young person and their families at the centre of all planning
- Undertaking delegated assessments, care planning and evaluation of children's care needs and taking action or initiating emergency care if the patient's condition deteriorates, addressing any issues/complications
- Utilising evidence based practice and research to inform care treatments that lead to the desired outcomes for children
- Ensuring the safe custody and administration of medication and reports any discrepancies
- Working towards supporting clinical supervision for others
- Suggesting changes in line with clinical audit and assist in implementing positively
- Acting as a co key worker with support from senior staff.
- Once trained, lead shifts in the absence of senior staff
- Adhere to the Nursing and Midwifery Council Standards of Conduct, Performance and Ethics

As a band 6 your responsibilities would also include:

- Taking the lead on shifts and leading the team in the assessment, planning, implementation and evaluation of the child/young person's care.
- Being responsible for the 1:1 and personal development reviews of staff and support clinical supervision of others
- Assisting the senior sister in the effective and efficient use of the temporary staffing system
- Ensuring appropriate staffing levels and skill mix for the area
- Acting as a key worker and supporting junior staff in gaining the skills to undertake this role

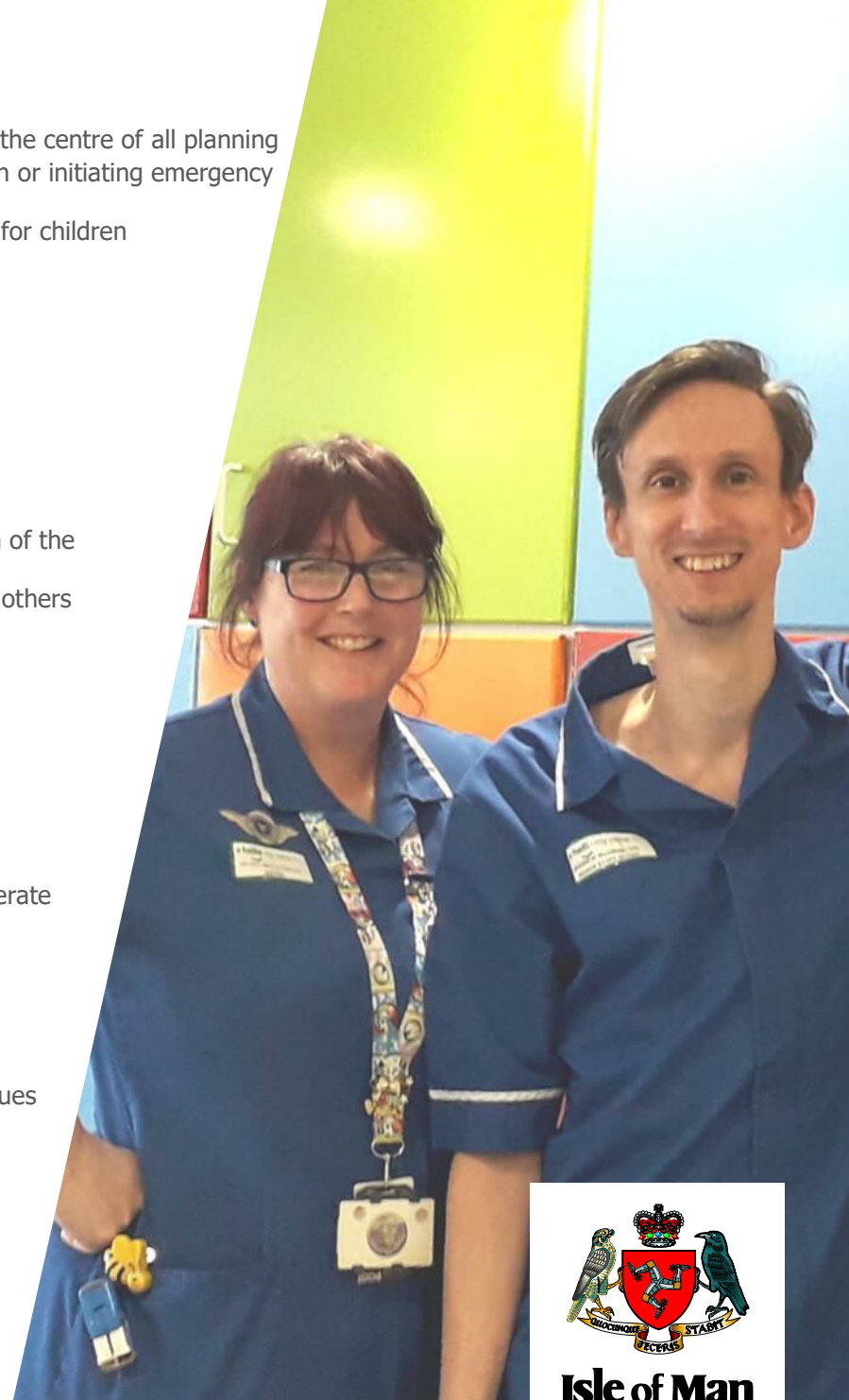
Qualifications, Experience and Skills

You will need to:

- Be a registered paediatric nurse on the NMC register
- Have a good understanding of professional accountability, be a professional role model and be computer literate
- Have a current professional profile and be able to show evidence of continuing professional development
- Have an awareness of the current issues in paediatric nursing
- Demonstrate effective communication and the ability to be a supportive team member
- Be able to assist with the implementation of change
- Be motivated and have a flexible approach to meet the needs of the role (working patterns include nights)
- Have a commitment towards quality in nursing and demonstrate evidence of your involvement in quality issues

The Band 6 Position essential requirements in addition to the above include:

- You will have a minimum of 2 years' experience in an acute area
- Advanced Paediatric Life Support Provider Course (or willingness to work towards)
- Recognised Teaching and Assessing Course (or willingness to work towards)
- Be confident to challenge, negotiate and influence
- Demonstrate excellent organisational skills and ability to prioritise and manage workload



Isle of Man
Government

Reilrys Ellan Vannin