



Your candidate pack

Non-Executive Director & Chair of Heart of Medway Housing Association

Together we are one team | #teammhs

Letter from Ashley Hook

Thank you for your interest in becoming a Non-Executive Director at mhs homes and Chair of Heart of Medway Housing Association. This is a great time to join our organisation with an exciting opportunity to contribute to the leadership of mhs homes.

The mhs homes group is a charitable housing association. We own and manage over 10,000 homes in Kent. We're unique in being the largest social landlord in the UK not registered with the social housing regulator. We also have a subsidiary, Heart of Medway Housing Association, which owns over 800 homes and is registered with the Regulator of Social Housing. The successful candidate will sit on the boards of both organisations and Chair the Heart of Medway Board.

The housing crisis in the UK is particularly acute in the south east. As a leading housing charity, we have a responsibility to use our resources effectively so we can reduce poverty and help those in housing need. Our ultimate ambition is to help end the housing crisis in north Kent.

We have a reputation as a dynamic organisation with entrepreneurial flair and strong social purpose. Our aim is to be a highly visible local landlord which maximises the best of digital opportunities so that our talented workforce can support those customers that need our help most. Our 'Service Deal' transformation programme is critical to helping us increase the level of business agility to achieve this. Much emphasis is also placed on working with local communities and partners. In the next three years we will invest £140 million in building over 800 new homes.

If you would like a confidential conversation about the opportunity to be a Non-Executive Director and Chair of Heart of Medway Housing Association, please contact Anna Keast, Company Secretary, on 01634 354167.

We look forward to hearing from you.



Could you help us end the housing crisis in north Kent?

Decent housing should be a basic human right, but sadly, it's a right that too many people are denied.

We provide secure, affordable homes as a stepping stone to a better future. We have a big ambition, to help end the housing crisis in north Kent. You'll help us by contributing to the strategic leadership of the organisation.

You'll be joining us during the biggest transformation of housing services in our history. We're driving forward a new culture; a culture that re-addresses the balance of a traditional landlord-tenant relationship, and focuses our offering around the digital world.

With an ambitious growth agenda, we're fully committed to making sure the governance structure has the mix of skills required to equip the organisation to meet current and future challenges.

We're looking for someone with an excellent understanding of the social housing sector, a strong understanding of the role of a Non-Executive Director/Trustee and the ability to be an effective Chair.

Interested?
Keep reading...



About the role

This is an exciting opportunity to get involved in the overall leadership of mhs homes group and makes sure it's:

- Financially strong
- Well managed
- Delivers excellent services

As an important part of the group Board, together with the other members, you'll be:

- Developing our vision in partnership with the Chief Executive
- Acting as a bridge between us and the outside world
- Developing strategies for growth, new business activities and diversification into areas which link to our core values

The successful applicant will be a proven strategic thinker; with extensive experience and understanding of the social housing sector. We're looking for a person that understands the role of a non-executive with high level management and governance skills and the ability to be an effective Chair. Developing the road map for the future will involve making strategic choices about which opportunities and business streams to progress - balancing resources and costs with the need to deliver excellent service and corporate governance obligations.

Read the role profile to find out more about the job

About mhs homes group

As well as providing affordable homes to the people who need them most we're also passionate about investing in our communities. Here's how we're organised.

mhs homes group includes:

mhs homes Ltd

mhs homes Ltd is a private company limited by guarantee. Initially set up in 1990, we became a registered charity in 2017.

Heart of Medway Housing Association Ltd

Set up in 2010, Heart of Medway is a registered provider with the Regulator of Social Housing and has charitable objectives.

Chatham Maritime K1 Construction Ltd

Set up in 1996, Chatham Maritime K1 Construction is a private company limited by shares.

Chatham Maritime K1 Developments Ltd

Setup in 1996, Chatham Maritime K1 Developments is a private company limited by shares.

Lord Kitchener Memorial Homes Trust

Setup in 1962, Lord Kitchener Memorial Homes is a registered charity. mhs homes Ltd is the corporate trustee.



You can learn more about the group by reading these key documents

Our financial statement and annual report

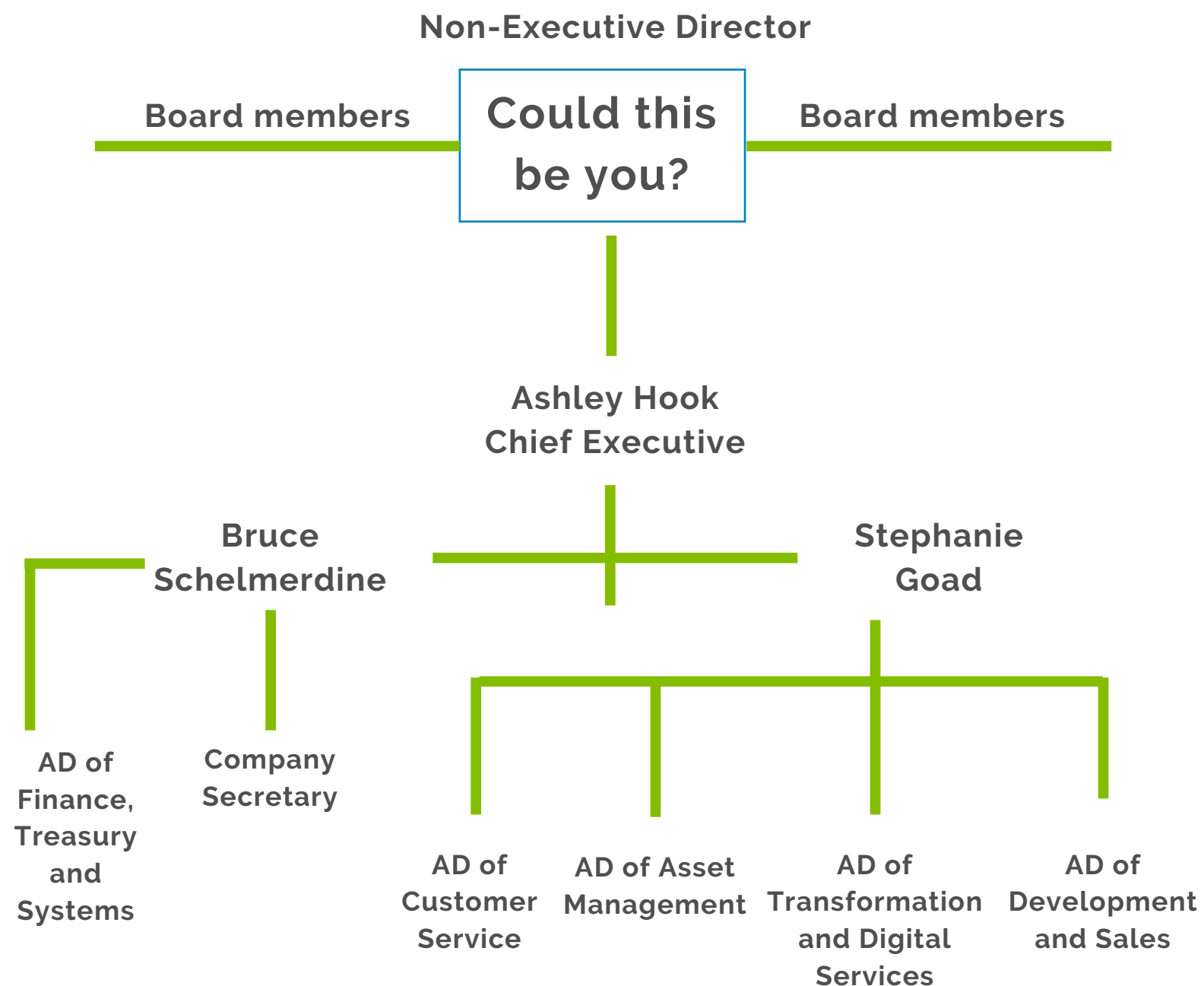
Our three year Strategic Plan 2018-2021

The difference we make

There's more on our website too



The team



There's a further 260 talented colleagues working across mhs homes

Meet the Board and Leadership Team here

When you join us, you're not just becoming a Board member, you're becoming part of #teammhs.

If you're up for the challenge,

apply now!

I look forward to hearing from you.

Ashley Hook
Chief Executive

